

© PHG 2022

Brassmill Lane Trading Estate, Bath, BA1 3JF
TEL: 01225 303 900 | techsupport@roperrhodes.co.uk

WROSE LED Illuminated Mirror with Bluetooth® Wireless Technology Installation & Aftercare Instructions

Retain for future reference

AO|11.21|V1

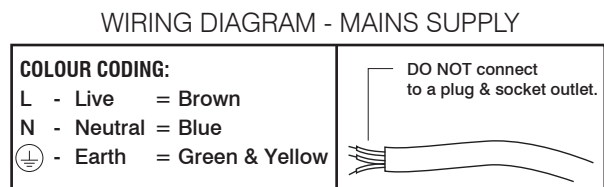
Electrical Safety

Suitable for UK Installations **only**.

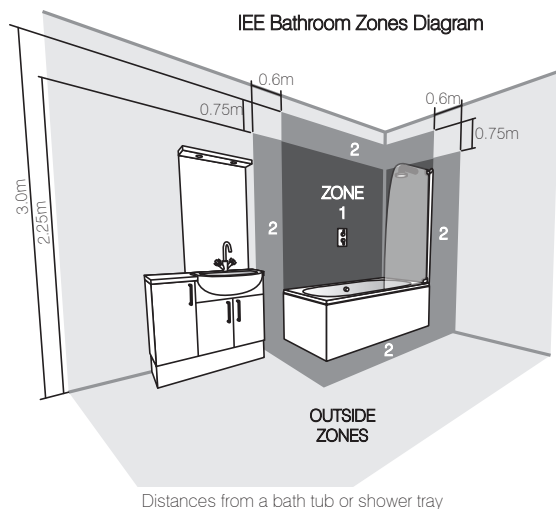
All fittings must be installed by a competent person, in accordance with current IEE wiring regulations. If in doubt consult a qualified electrician.

Important: Always switch off the electrical supply at the mains before installation and maintenance. It is recommended that the fuse is withdrawn or the circuit breaker is switched off for the necessary circuit before installation commences.

This product is manufactured to class I category and **must** have an earth connection.



Bathroom Zones



Bathroom fittings are subject to the appropriate zones in accordance with IEE Regulations. This product is **only** suitable for permanent indoor installation in Zone 2 and outside zones. (See above) This product is **not** suitable for installation in Zone 0 or 1, saunas, steam rooms or shower cubicles. Do **not** connect to a trailing plug and socket. Do **not** install onto surfaces that are either damp or electrically conductive.

After care service

Cleaning your product

When cleaning the mirror or any mirrored surfaces it is recommended to use a soft, dry, non abrasive cloth with the mirror turned off. Do not use cleaning agents or abrasive materials.

Do not allow moisture to come into contact with any electrical components.

Troubleshooting & After care service

For any further assistance, please contact our tech support team at: techsupport@roperrhodes.co.uk.

10 Year Guarantee

We have complete confidence in this Roper Rhodes bathroom mirror and as such it is offered with a 10-year guarantee against defects in manufacture.

The guarantee requires that this product be used in the manner for which it was intended and that it is installed and maintained in accordance with the fitting instructions.

The guarantee covers products in domestic use only and is not transferable. In the unlikely event that this product should fail during the guarantee period we will either replace the faulty part or the complete unit as appropriate.

Compliance


This product complies with all relevant British and European safety standards.



Connecting via Bluetooth®

Bluetooth®

Pairing to your device

1. Turn your iOS, Android, or Windows device's Bluetooth® ON and search for new devices Bluetooth®.
2. Turn on the Bluetooth® by pressing the  symbol. The mirror will sound to signal that Bluetooth® is on. It will sound again to state it's in pairing mode.
3. Select "Play" on your device list. If asked for a passcode, enter "0000", and the device will pair.
4. Once connected the mirror will sound again to signal that the pairing has been successful.

Note: The paired device will be saved on the product and the pairing process will only need to be re-initiated if the pairing is forgotten on your device.
Note: The mirror can store up to 4 devices on its memory. If you connect 5 devices, the mirror will forget the first device.

Repairing to your device

1. Turn Bluetooth® connectivity off on any previously paired devices
2. Follow the "Pairing to your device" above

Note: If a previously paired device is not present within the Bluetooth® range then the product will re-enter pairing mode.

Playing music on your speakers

When connected via Bluetooth®, play music on your device and the sound will play through the Play Mirror.

Notes:

- Some devices may require you to select the audio output.
- Only your device can be used to change volume, skip songs and play/pause the selected media.
- Make sure your device is within 7-10 meters of the product playing music.
- Only 1 device can play music at a time.

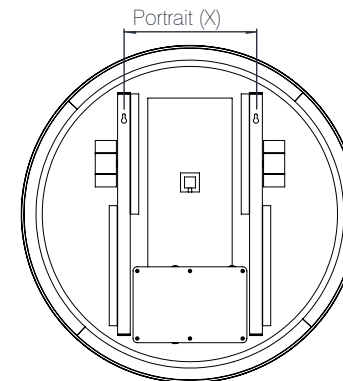
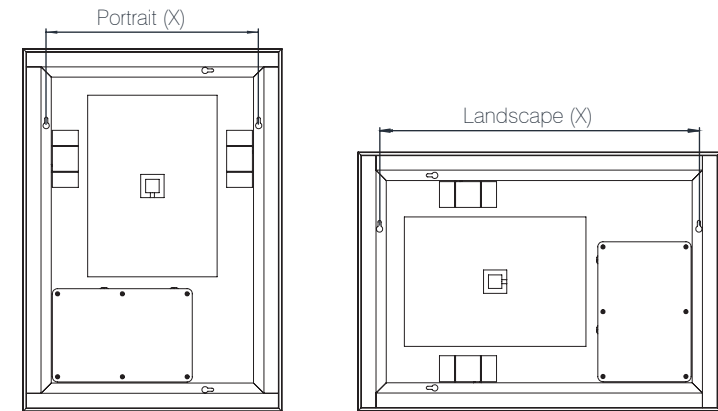
Installation Procedure

Important: Before starting the installation process, make sure the electrical supply is switched off. It is recommended that the fuse is withdrawn or the circuit breaker is switched off for the necessary circuit.

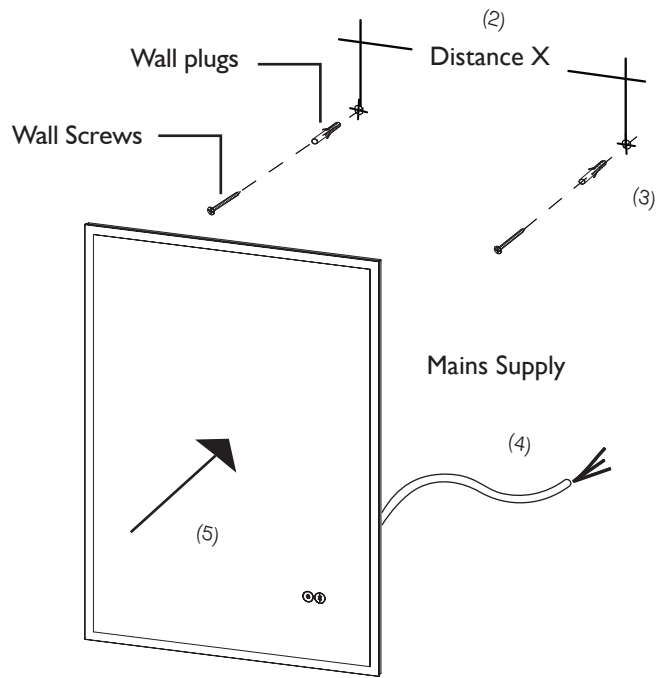
Important: Before starting the installation process, ensure the wall construction is suitable and can support the weight of the mirror.

Note: The wall plugs supplied are suitable for solid stone / brick walls. For any other wall material use specialist wall plugs.

- 1) Measure the distance (X) between the keyhole slots on the back of the mirror.
- 2) Mark out the fixing screw positions on the wall using a pencil to the desired height, ensuring they are spaced at distance (X).



Installation Procedure



3) Drill the marked out positions and fit the wall plugs accordingly. Fix the screw into position, leaving a small amount of the screw head proud of the wall for hanging.

4) Make the electrical connection from the mirror to the mains supply. Use the connection wire found at the rear of the mirror to make the necessary connections in accordance with the current IEE regulations. A second person will need to hold the mirror in place whilst electrical connections are made.

5) The mirror should easily slide onto the fixing screws and secure into place.


NOTE: To secure the mirror further, a small amount of silicone sealant can be applied to the side of the extrusions to prevent the mirror being accidentally pulled away from the wall.

To remove the mirror, the mirror should first be lifted and then pulled away from the wall.

Operating Instructions

The Play mirror comes with LED lighting and a heated demister pad, which are controlled via a touch sensor located on the front face of the product. The product can be controlled as detailed below:

Turn Mirror ON/OFF

To turn the product on/off, press the  button. When the product is on, the heated demister will turn on.

Change LED colour

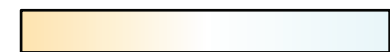
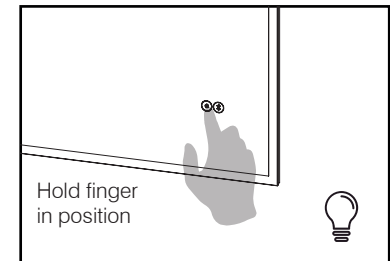
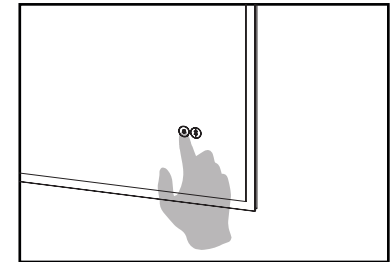
1. Double tap to change between modes.
2. Place your finger on the Touch sensor to adjust the colour temperature.
3. Remove finger from Touch sensor once desired colour temperature is achieved.

Note: The colour temperature will be memorised.

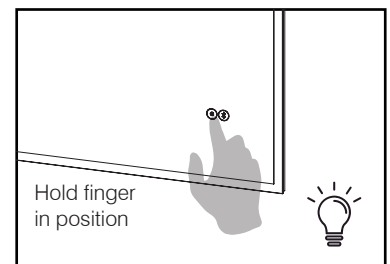
Change LED intensity

1. Double tap to change between modes.
2. Place your finger on the Touch sensor to adjust its brightness.
3. Remove finger from Touch sensor once desired intensity is reached.

Note: The brightness will be memorised.



Warm White 2700K → Natural White 4000K → Daylight White 6000K



<10% → 100%