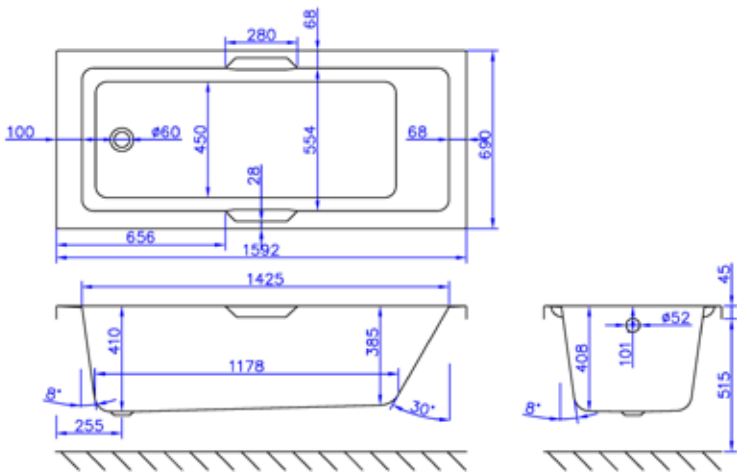


Wilsden 1600 x 700mm Single Ended Bath

INSES16070SEW



Specification	
Finish	White
Dimensions	515(h) x 1592(w) x 690(d) mm
Weight	25kg
Bath Type	Back to wall
Tapholes	Can be drilled
Water Capacity	213 Litres
Legs Supplied	Yes
Leg Fixing Type	Cradle & Wall Supports
Legs Adjustable	Yes
Bath Surface Material	Acrylic
Bath Surface Material Thickness	5mm Acrylic + GRP
Waste Supplied	No
Waste Integrated	No
Click Waste Finish	–
Overflow Bath Filler Can Be Fitted	Yes
Overflow Type	Standard 52mm Drilling
Overflow Height	450mm
Encapsulated Base Board	Yes
Base Board Material	Wood
Material Used to Cover Base Board	Glass fibre resin
Weight of Material used to cover base board	13kg
Bath Frame	Yes
Bath Frame Material	Wood



Key Features + Benefits

30

Years Guarantee

213

Litres

Bath Capacity

Certifications + Accreditations

