

Technical Data Sheet | Bathroom Tap

www.instinctproducts.co.uk

Tulla Bath Filler (Two Taphole)

INSTTUL-BF, INSTTUL-BF-BL, INSTTUL-BF-BB



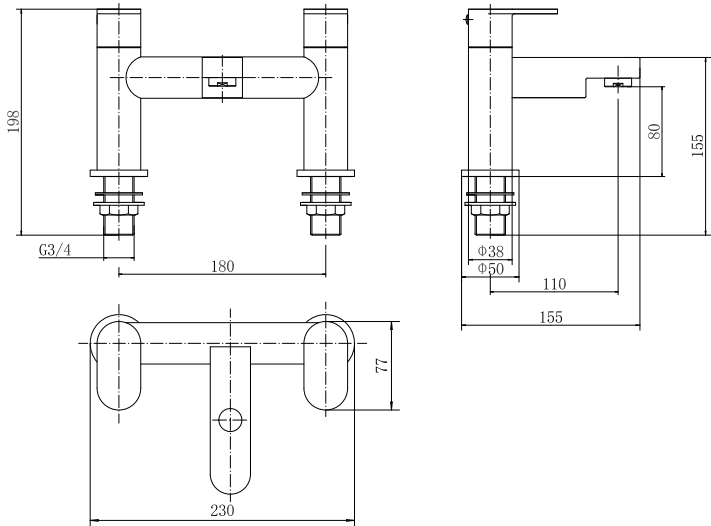
Specification	
Finish	Chrome (INSTTUL-BF) Matt Black (INSTTUL-BF-BL) Brushed Brass (INSTTUL-BF-BB)
Dimensions	145(h) x 230(w) x 155(d) mm
Weight	1.84kg
Body	Brass
Spout Material	Brass
Fittings	Plastic backnut & washer
Connection	3/4" BSP Threaded tail
Cartridge Size	3/4" QT headwork
Flow Restrictor	No
Max Static Pressure	8.0 Bar
Min Operating Pressure	0.2 Bar
Max Operating Pressure	5.0 Bar
Max Water Temperature	80°C

Flow Rates				
Pressure	0.2	0.5	1	3
Flow Aerator	13.2	19.9	27.8	47.7

All Pressures in Bar. All flow in L/Min. Dimensions supplied are nominal and subject to tolerance. Inclusion or restrictors (sold separately unless stated) will affect flow rate result. Performance details are based on trials under test conditions and for guidance only. The Company reserves the right to change product specification without prior notice.

Spares	
Hot Cartridge	SP02-TUL-BF
Cold Cartridge	SP15-TUL-BF
Handle Set	SP06-TUL-BF
Aerator	SP22-TUL-BF
Flow Straightner	SP24-TUL-BF

The Company is not responsible for the installation of the spares supplied, which must always be fitted by a competent person. Parts supplied are in many cases identical to the original component whilst others are offered as a suitable alternative. All spares listed are suitable for direct replacement unless stated. The Company reserves the right to change product specification without prior notice.



Key Features + Benefits

5

Years Guarantee

LP

Low Pressure

Flow Straightener

Plastic Backnut

Single Flow

Certifications + Approvals