

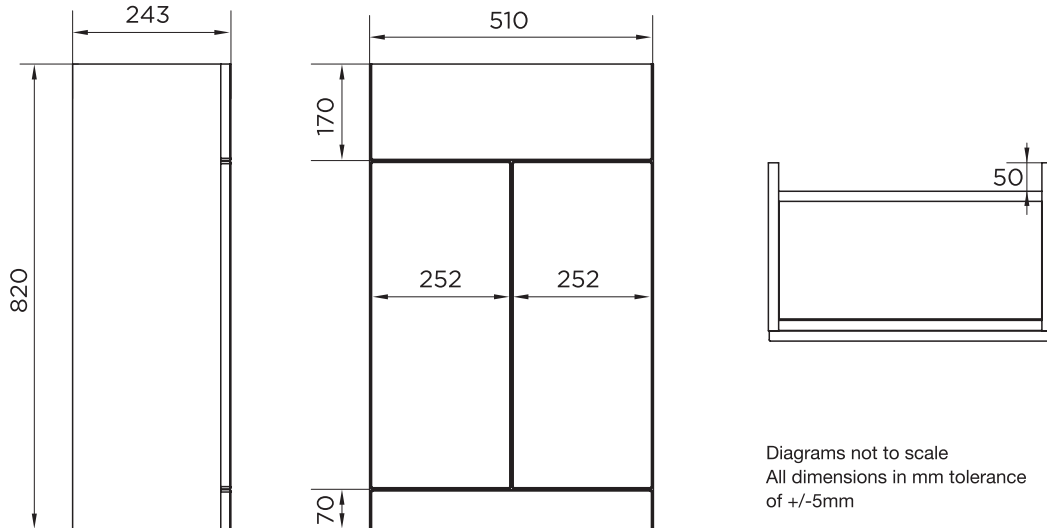
Technical Data Sheet

P SHAPE BASIN UNIT

What's in the box: 1 x INS-T29135N/000 or INS-T29135N/456 or
INS-T29135N/402 or INS-T29135N/462 or INS-T29135N/815



*Reference basin TDS for further info



Materials

Carcass: 18mm MFC

Fascia Components: Edged 18mm MFC

**Dimensions are subject to change, customers are advised to measure actual product before commencing installation.

***Fixing point dimensions are for guidance only, the positions of wall fixing must be checked when product is received.

Extra Dimensions

Internal Cabinet Depth:

570(h) x 470(w) x 150(d)mm

FAQs

Q: How big is the plumbing void at the back of the furniture?

A: 50mm

Q: Are the handles fitted?

A: No, handles need fitting

Q: Are the doors hinges soft close?

A: Soft close hinges

Q: How deep is the unit when the doors are fully open?

A: Approx: 480mm

Q: Can the doors be adjusted?

A: Door hinges can be adjusted as per supplied instructions

Q: What is the interior finish of the unit?

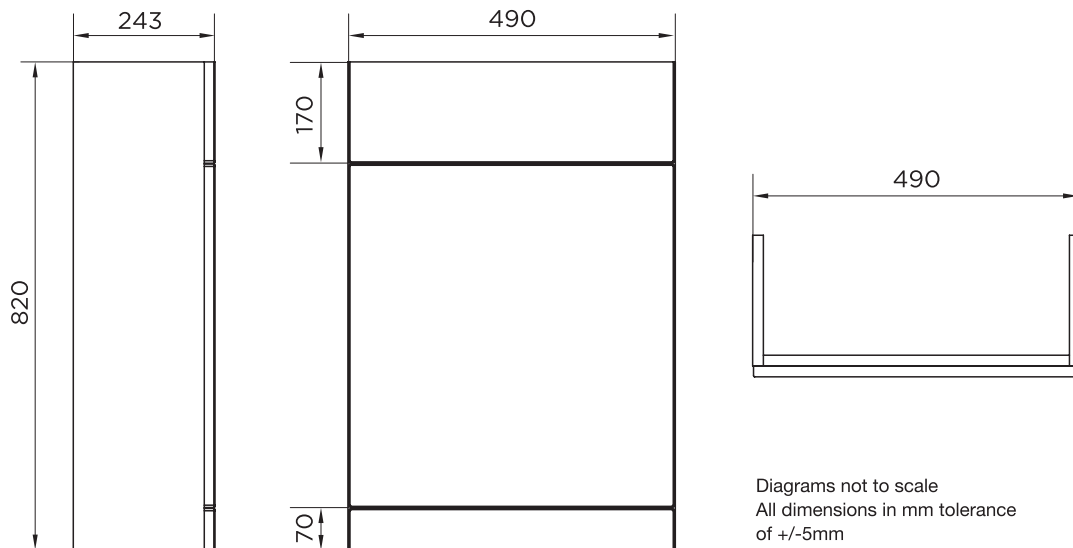
A: Interior is the same colour as the external carcass

NOTE: Colours unique to Instinct - No RAL Code available

Technical Data Sheet

P SHAPE WC UNIT

What's in the box: 1 x INS-T29136N/000 or INS-T29136N/456 or
INS-T29136N/402 or INS-T29136N/462 or INS-T29136N/815



Materials

Carcass: 18mm MFC

Fascia Components: Edged 18mm MFC

**Dimensions are subject to change, customers are advised to measure actual product before commencing installation.

***Fixing point dimensions are for guidance only, the positions of wall fixing must be checked when product is received.

Extra Dimensions

Internal WC measurements:

205(d) x 455(w)mm

FAQs

Q: How do you access the cistern?

A: The front fascia clips off for access

Q: Is the Cistern included?

A: No

Q: Is the push button hole cut out?

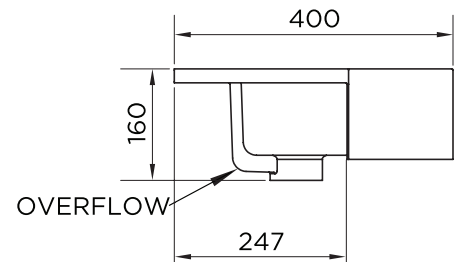
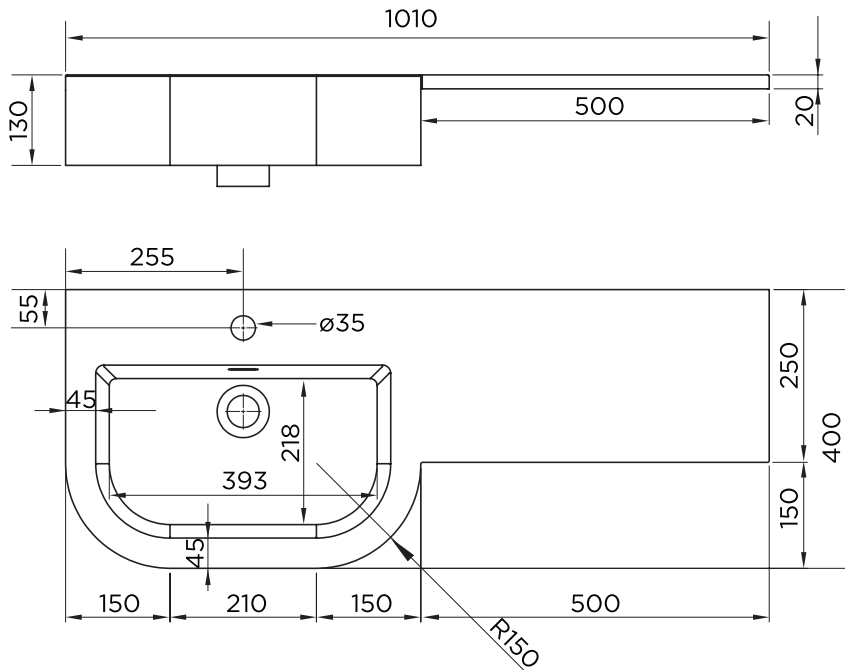
A: No

NOTE: Colours unique to Instinct - No RAL Code available

Technical Data Sheet

P SHAPE BASIN LEFT HAND/RIGHT HAND

What's in the box: 1 x INS-T878 or INS-T879



Left Hand basin shown

Diagrams not to scale
All dimensions in mm tolerance of +/-5mm

Materials

Basin: One Piece Solid Surface Basin - One Tap Hole

**Dimensions are subject to change, customers are advised to measure actual product before commencing installation.

***Fixing point dimensions are for guidance only, the positions of wall fixing must be checked when product is received.

FAQs

Q: What is the maximum water depth of the basin

A: 65mm to the overflow

Q: What is the internal depth

A: 100mm

Q: What's is the width of the Tapledge?

A: 110mm