


Sauermann part # : SI1802SCAN23

Performance and technical characteristics		
	Mains supply	230V~ 50Hz - 70 W – 0.67A
	Max flow rate	500 l/h
	Max discharge head	5.0m
	Max pressure	5.4 m (flowrate=0)
	Sound level in application (Measured in Sauermann acoustic lab, pump operating with water)	45 dBA at 1m (3.3ft)
	Detection Levels	On=43mm, Off=27mm, Alarm=67mm
	Max condensate temperature	65°C, 80°C in short peak
	Max condensate acidity	pH > 2.5 (Gas condensing boilers)
	Alarm contact	NC 4 A resistive – 250V
	Thermal protection (overheat)	105°C (auto-reset)
	Protection	IP 20
	Safety Standards	CE
	RoHS directive	Conform
	WEEE directive	Conform
Pump dimensions	L 279 x W 130 x H 171mm	
Box dimensions	L 293 x W 136 x H 250mm	
Weight (including box)	± 2.6 kg	
Master Pack quantity	4 pieces	
Pallet quantity	64 pieces	

Features & benefits

- 4 fixing slot holes that allow the pump to be attached either on a wall or hanging from a ceiling (on M8 or smaller screw thread size).
- **4 inlets** Ø30mm
- Quarter turn **easily removable check valve**, for PVC tubing 10 mm (3/8”) or 6 mm (1/4”)
- **Low sound level** – quiet operation
- Easily removable tank and reversible pump
- Oil and acid resistant float
- Reinforced mechanical structure **improving shocks resistance**
- **High discharge head**
- High flow rate for **shorter running time**
- Thermal protection 105°C auto-reset

Description

One-piece centrifugal pump with tank.

- Centrifugal pump for heavy and contaminated condensates
- **Suitable for gas condensing boilers** producing acid (pH > 2.5) and hot condensates (65°C max, 80°C in short peak)
- Normally closed alarm contact that automatically cuts off the air conditioning system compressor or a solenoid valve.

Kit contents

- Integrated tank pump of 2,0 l
- Integrated check valve
- Power cable : 2,0 m European plug (L,N,G)
- Alarm wires : 1,0 m
- **PVC Tubing :5m roll - 10 mm ID**
- ACC02040 Ø 1"-1"1/4 - 1"1/2 (24-32-40m) adapter
- 2 screws + plug

Applications

Condensing Boilers
High efficiency Gas furnace

Multi-cassettes
Column units
Laboratory evaporators
Display cabinets

Cold store evaporator
Ducted units



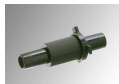
Accessories



ACC 00125, ACC 00126
Clear tubing Ø 10 mm
ACC 00125 : 25 m roll
ACC 00126 : reinforcing
25 m roll



Adapter
ACC 00225: Ø 24-25mm
ACC 00230: Ø 32 mm
ACC 00240: Ø 40 mm



ACC 00801
Check valve Ø 10
mm

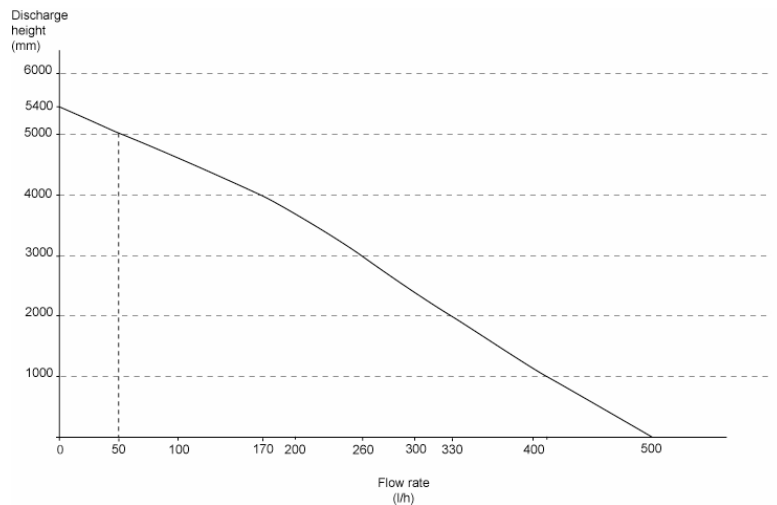


Table of true flow rate for SI 1802

The head losses defined in this table are calculated with a Ø 10 mm int. flexible pipework	Vertical discharge head	Total tubing length			
		5 m (in l/h)	10 m (in l/h)	20 m (in l/h)	30 m (in l/h)
	1 m	380	300	240	190
	2 m	310	260	200	150
	3 m	240	200	145	110
	4 m	150	130	80	60
	5 m	30	20	0	0