

LINEAR SOFT CLOSE TOILET SEAT - INST03016

INSTINCT®

Fitting Instructions

Please read carefully before attempting to fit the seat. If you are not the end user, please make sure the aftercare instructions are made available for the end user to read.

- Place the rubber top-fix inserts into the fixing holes in the toilet pan. Insert the screws within the hinge anchors with integrated rubber seal, as shown and begin to tighten the screws until they are loosely secured, to allow for adjustment of the seat on the pan.
- Maximum adjustment of the pin position is achieved by rotation of the hinge anchor around the screw (adjustment A in the diagram). Further fine adjustment of the pin position can be achieved by sliding the screw in the hinge anchor (adjustment B).
- Adjust the position of the hinge anchors so that the pins align with the sockets on the hinge. Insert the pins into the hinge sockets and firmly press down until you hear them click into position.
- Adjust the hinge anchor position to make the seat line up with the pan. When you are satisfied the seat and pan are in the correct position, remove the seat from the hinge anchors (see quick release diagram opposite) and fully tighten the screw in the top-fix insert. Place the cover plates over the hinge anchors and replace the seat and click into position.

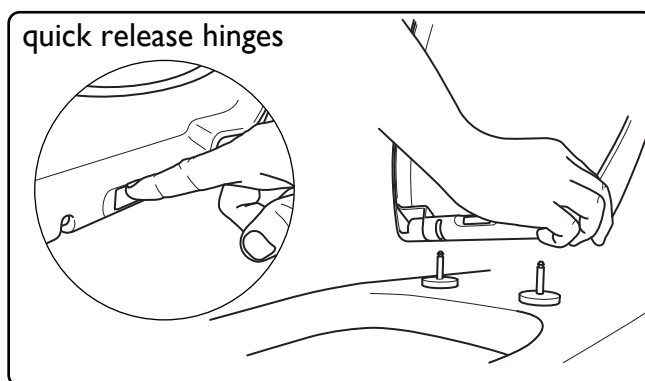
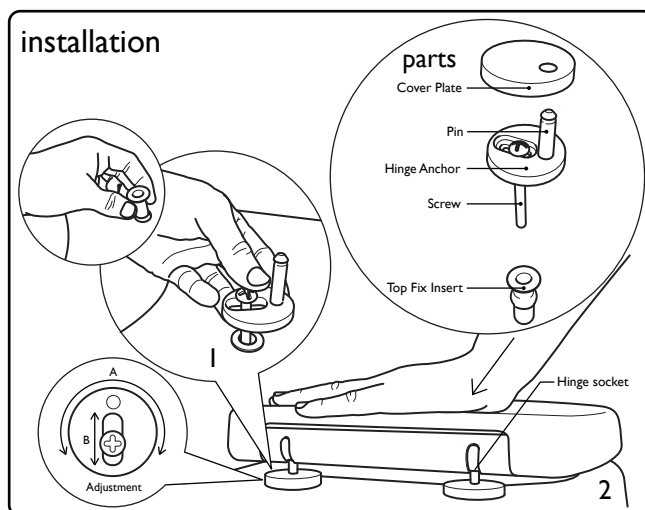
Quick Release Hinges

This toilet seat is designed so that it can be quickly removed for cleaning the toilet pan.

To activate the quick release mechanism lift the lid and seat up.

Press the buttons on the inside barrel of the seat and lift.

To replace the seat align the sockets with the pins and firmly press into position.



Aftercare



Clean surfaces weekly with a soft damp cloth and mild soap solution



Do not scrub or scour



Do not use abrasive cleaning agents on the seat. The seat must be kept in an upright position until any WC cleaner has been flushed away to prevent discolouring



Do not stand on the lid or ring of your toilet seat

After a few days check that the fixings are still tight. This is necessary as the rubber components may compress during the first few days. Periodically check all fixings to ensure none have come loose and re-tighten where necessary. Please take care when handling or moving the toilet seat as careless handling may cause damage or injury. The toilet seat can be dangerous if incorrectly installed. Assembly should be carried out by a competent person. No liability will be accepted for damage or injury caused by incorrect product installation or assembly.

