

Hemsworth Neo 420mm Cloakroom One Taphole Basin INST0413265

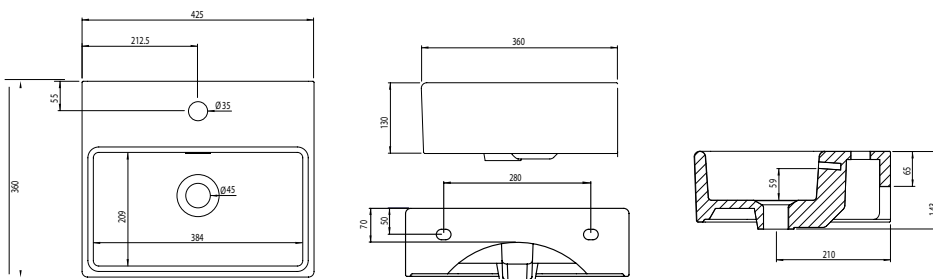


Specification

Finish	White
Dimensions	125(h) x 420(w) x 335(d) mm
Weight	12.35kg
Basin Material	Ceramic
Overflow	Yes
Chainstay Hole	No
Reversible	-
Taphole Positioning	Centre

FAQs

Please see next page



Key Features + Benefits



Years
Guarantee



One Taphole
Basin

Certifications + Approvals

Roper Rhodes

Brassmill Lane Trading Estate, Bath, BA1 3JF. Technical Support – Tel: 01225 303 900 Email: sales@roperrhodes.co.uk

All information on the data sheet is correct at the time of publication. All measurements are approximate and subject to standard tolerances.

Hemsworth Neo 420mm Cloakroom One Taphole Basin INST0413265

FAQs

Q – What is the maximum water depth of the basin?

A – 59mm up to the overflow.

Q – What is the width of the Tapledge?

A – The Tapledge is 130mm wide.

Q – What is the distance from the Taphole centre to Basin Waste?

A – 155mm

Q – Can this basin be wall mounted?

A – Yes, but fixings are not included.

Q – What are the taphole/basin waste sizes?

A – All sizes are to British Standard - (BS EN 31)

– Diameter of the central taphole = 35mm : +2/ -1mm

– Bore of the waste outlet hole = 46mm : +2 / - 3mm

– Diameter of the base for the seal between the waste outlet hole and the waste fitting = ≥ 60 mm