

### Hemsworth Classic 465mm Ceramic One / Two Taphole Basin INST041305, INST041306



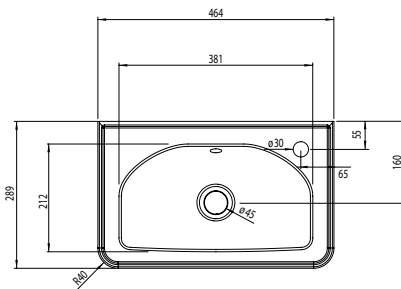
#### Specification

Finish	White
Dimensions	168(h) x 465(w) x 290(d) mm
Weight	9kg
Basin Material	Ceramic
Overflow	Yes
Chainstay Hole	Yes (INST041305) No (INST041306)
Reversible	-
Taphole Positioning	Centre

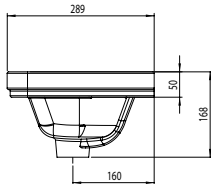
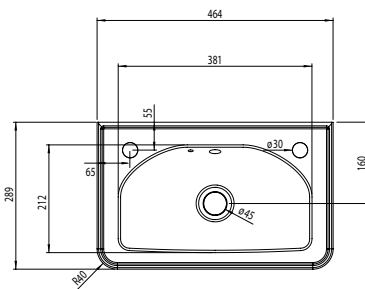
#### FAQs

Please see next page

One Taphole Basin



Two Taphole Basin



#### Key Features + Benefits

**5**

Years  
Guarantee



One Taphole  
Basin



Two Taphole  
Basin

#### Certifications + Approvals

#### Roper Rhodes

Brassmill Lane Trading Estate, Bath, BA1 3JF. Technical Support – Tel: 01225 303 900 Email: sales@roperrhodes.co.uk

All information on the data sheet is correct at the time of publication. All measurements are approximate and subject to standard tolerances.

### Hemsworth Classic 465mm Ceramic One / Two Taphole Basin INST041305, INST041306

#### FAQs

**Q – What is the maximum water depth of the basin?**

A – 86mm up to the overflow.

**Q – What is the internal depth?**

A – The internal depth is 114mm.

**Q – What is the width of the Tapledge?**

A – The Tapledge is 115mm wide (from corner of basin at 45°).

**Q – What is the distance from the Taphole centre to Basin Waste?**

A – 215mm (diagonal).

**Q – Is the basin glazed on the back face?**

A – No.

**Q – For 2TH basin, are the chain & plug supplied?**

A – No - they should be purchased with waste.

**Q – What is the overflow rating?**

A – CL10 integrated overflow.