

Firbeck 355mm Countertop Basin (Black)

INST04003

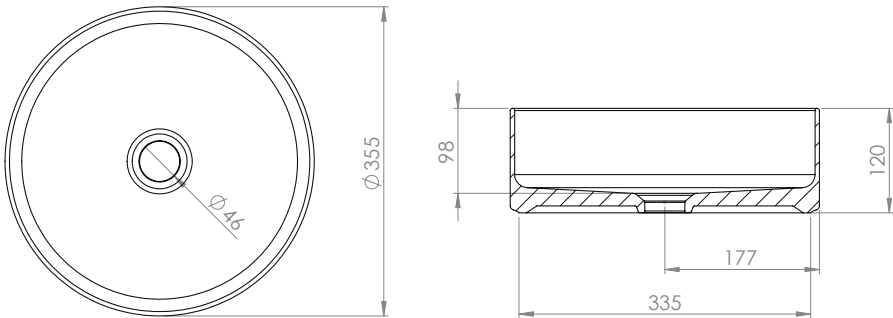


Specification

Finish	Black
Dimensions	120(h) x 355(w) x 355(d) mm
Weight	7kg
Basin Material	Ceramic
Overflow	No
Chainstay Hole	No
Taphole Positioning	–

FAQs

Please see next page



Key Features + Benefits

5

Years Guarantee

499-300mm

Small Size Basin

Countertop Basin

Certifications + Approvals

Firbeck 355mm Countertop Basin (Black)

INST04003

FAQs

- Q – What is the maximum water depth of the basin?

A – Measurement not applicable. Since this basin does not have an overflow channel it should only be used with an open waste.
- Q – Can this basin be wall mounted?

A – No.
- Q – What ranges can this basin be used on?

A – Please see compatibility matrix below.
- Q – What are the taphole/ basin waste sizes?

A – All sizes are to British Standard – (BS EN 31)
 - Diameter of the central tap hole = 35mm : +2/ -1mm
 - Bore of the waste outlet hole = 46mm : +2 / - 3mm
- Q – Where should the basin be located on the worktop?

A – We recommend it being centralised on the worktop left to right. Front to back should be set based on desired tap location and waste outlet.

Countertop Basin + Modular Furniture Compatibility												
		Nostell			Espada				Crambeck			los
Range		500	600	800	500	600	700	800	500	600	800	500 600
INSTF355	Firbeck 355mm Fluted Countertop Basin	●	●	●	●	●	●	●	●	●	●	●
INST04002	Firbeck 355mm Countertop Basin	●	●	●	●	●	●	●	●	●	●	●
INST04003	Firbeck 355mm Countertop Basin (Black)	●	●	●	●	●	●	●	●	●	●	●
INST04001	Espada 390mm Countertop Basin		●	●	●	●	●			●	●	●
INST04004	Brierley 490mm Countertop Basin		●	●		●	●	●		●	●	●
INST04005	Keros Square 410mm Countertop Basin		●	●		●	●	●		●	●	●
INST04006	Keros Rectangle 460mm Countertop Basin		●	●		●	●	●		●	●	●