

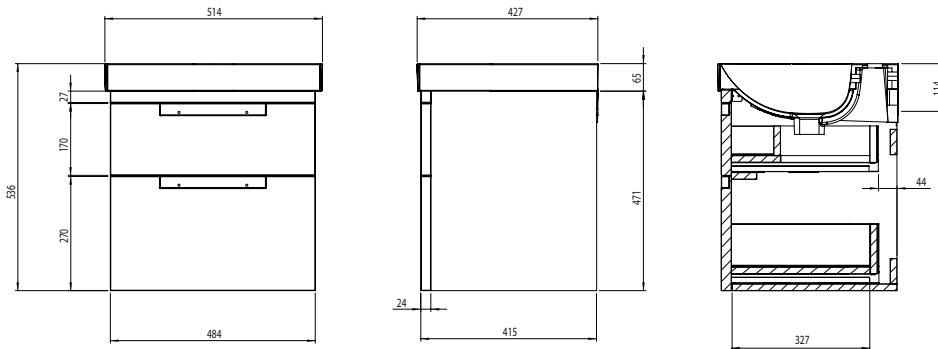
### Espada 500mm Wall Mounted Two Drawer Basin Unit

INST041411, INST041412, INST041413, INST041414, INST041420



#### Specification

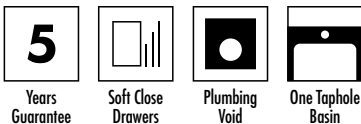
Finish	Gloss White (INST041411) Gloss Light Grey (INST041412) Matt Midnight Grey (INST041413) Matt Willow (INST041414) Swiss Oak (INST041420)
Dimensions	536(h) x 514(w) x 427(d) mm
Weight	21.97kg
Carcass Thickness	18/16mm
Carcass Material	MDF and MFC
Carcass Finish	Painted or PVC Wrap (INST041420)
Internal Cabinet Colour	Dark Grey
Plumbing Void	44mm
Cabinet Fixing Type	Adjustable wall hangers
Door / Drawer Finish	Painted
Door / Frontal Material	MDF
Number of Doors	None
Number of Drawers	Two
Number of Internal Shelves	None
Door Handing	-
Hinge / Runner Type	Soft close
Handle / Knob	Two chrome plated handles (supplied)
Handle Centres	-
Pre-Drilled / Marked for handles	Pre-cut groove



#### Extra Dimensions

Internal Drawer Depth (Front to Back) – 327mm  
Internal Drawer Height – 70mm  
Internal Drawer Width – 406mm  
Drawer Cut Out (W&D) – 204 x 243mm

#### Key Features + Benefits



#### FAQs

Please see next page

#### Certifications + Approvals

#### Roper Rhodes

Brassmill Lane Trading Estate, Bath, BA1 3JF. Technical Support – Tel: 01225 303 900 Email: sales@roperrhodes.co.uk

All information on the data sheet is correct at the time of publication. All measurements are approximate and subject to standard tolerances.

### Espada 500mm Wall Mounted Two Drawer Basin Unit

INST041411, INST041412, INST041413, INST041414, INST041420

#### FAQs

**Q – How big is the plumbing void at the back of the furniture?**

A – 44mm.

**Q – Are the handles fitted?**

A – No, handles need fitting.

**Q – Are the runners soft close?**

A – The runners are both soft close and quick release.

**Q – Can the drawers be adjusted?**

A – They can be adjusted as detailed in the supplied instructions.

**Q – How deep is the unit when the drawers are fully open?**

A – Approx. 780mm including handle.

**Q – What is the interior finish of the unit?**

A – Dark Grey on all units.