

Darton 1193 x 498mm Towel Rail (Dual Fuel)

DA1195BB-HE



Specification

| | |
|--------------------------|------------------------------|
| Finish | Brushed Brass |
| Dimensions | 1193(h) x 498(w) x 130(d) mm |
| Weight | 11.26kg |
| BTU Output/Hr | 916 |
| Watts @ Δ T50°C | 269 |
| Bars | 5 |
| Pipe Centres | – |
| Electric Element Wattage | 150 |
| Face to Face Connections | – |
| Air Vent Position | – |
| Material | Mild Steel |

All heat outputs are shown at 50°C Δt in compliance with BSEN442. Watts and Btu’s apply to Heating and Dual Fuel only.

Key Features + Benefits

15

Years Guarantee

MS

Mild Steel

DF

Dual Fuel

Certifications + Approvals

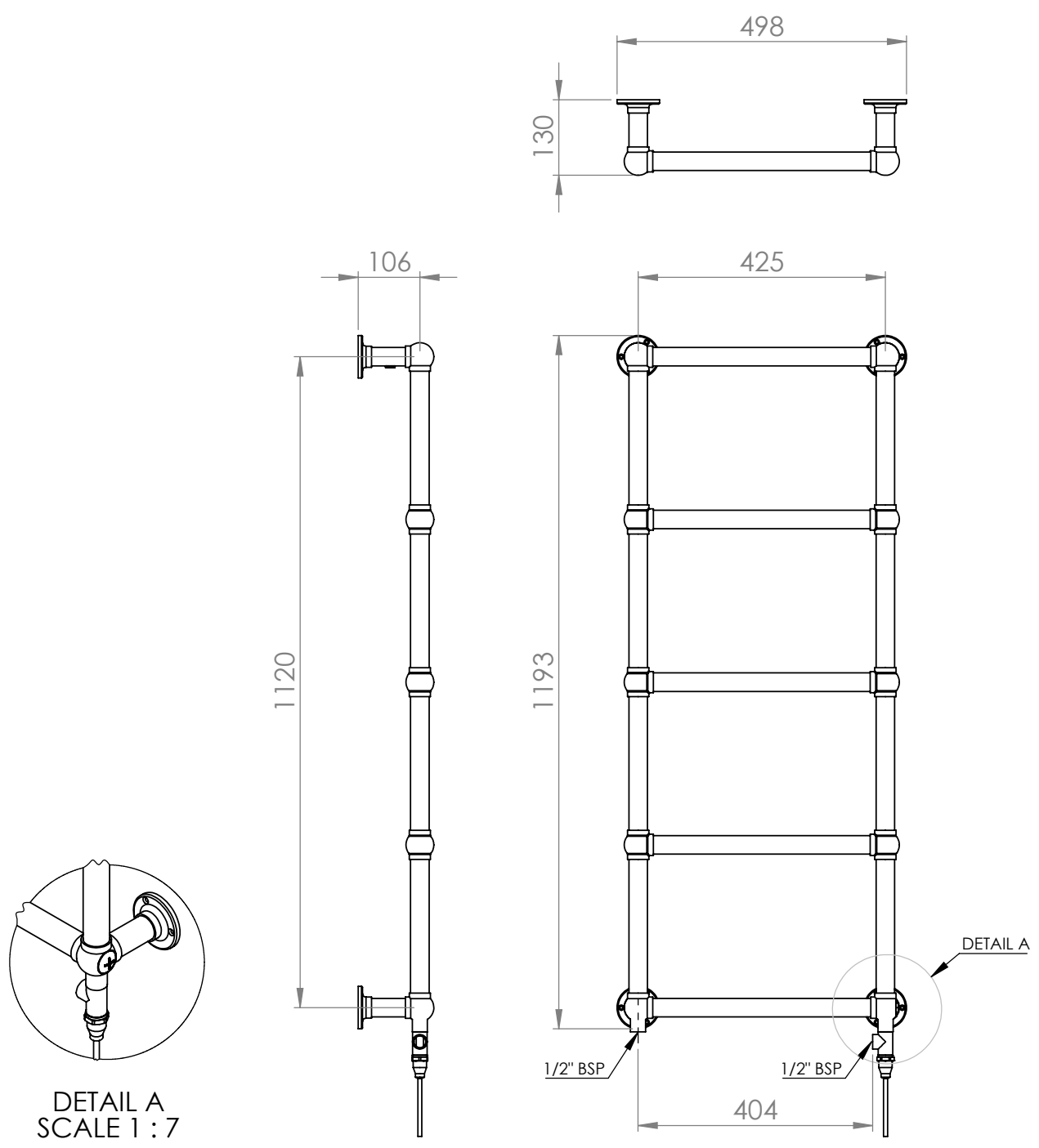
Technical Data Sheet | Designer Towel Rails

www.instinctproducts.co.uk

Darton 1193 x 498mm Towel Rail (Dual Fuel)

DA1195BB-HE

Vertical Connection



*Dual energy models require a conversion-tee, consult relevant drawing for details.

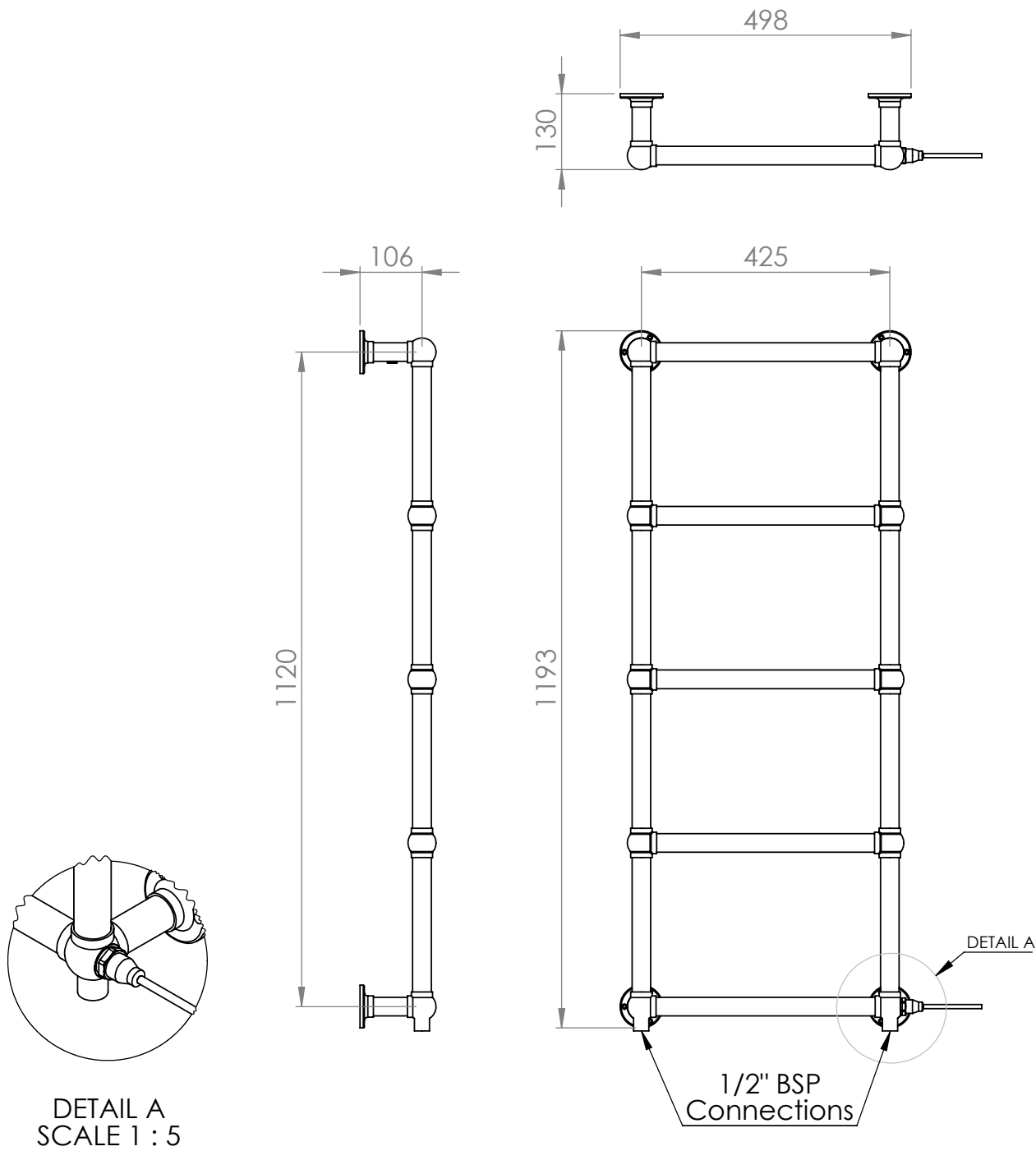
Technical Data Sheet | Designer Towel Rails

www.instinctproducts.co.uk

Darton 1193 x 498mm Towel Rail (Dual Fuel)

DA1195BB-HE

Horizontal Connection



*Dual energy models require a conversion-tee, consult relevant drawing for details.