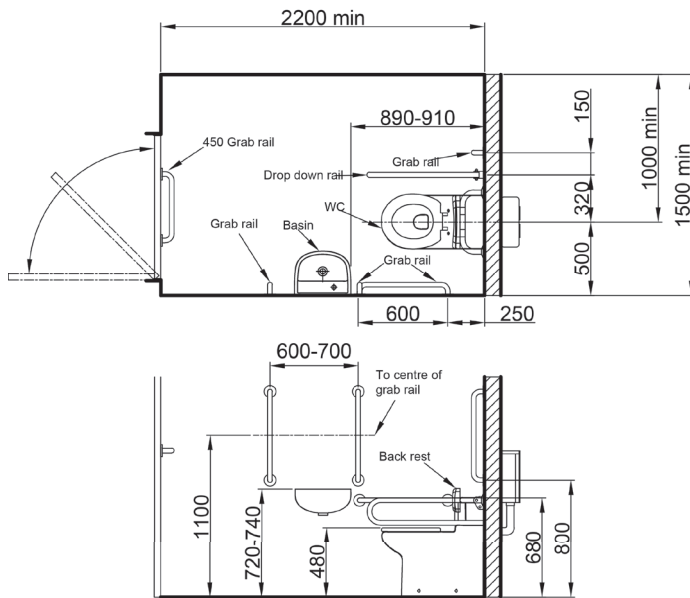


### DOC M Pack – Back To Wall Concealed Cistern, Basin (Two Taphole), Rails + Seat, Extended Lever (Chrome) DM800K/DG



Dark Grey



#### Cistern Specification

Finish	White
Dimensions	-
Weight	-
Cistern Fitting Manufacturer	Thomas Dudley
Lever	Spatula Lever
Lever Position	Universal
Inlet Position (When looking at WC)	Universal

#### Seat Specification

Finish	Dark Grey
Dimensions	-
Weight	-
Seat Hinge Material	Stainless Steel
Antibacterial Protection	No
Seat Type	Ring
UV Protection	Yes
Max Load Test	150kg
Seat Material	Urea Thermoset Formaldehyde (UF)

#### Pan Specification

Finish	White
Dimensions	-
Weight	-
Fixing Supplied	No
Fixing	Exposed

#### Basin Specification

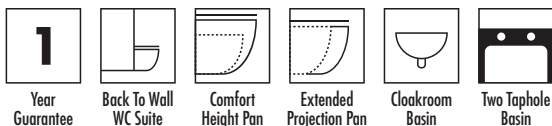
Finish	White
Dimensions	-
Weight	-
Overflow	No
Chainstay	No
Taphole Positioning	Equally Off Centre

#### FAQs

Please see next page

#### Certifications + Approvals

#### Key Features + Benefits



#### Nymas

Royce House, Royce Avenue, Billingham, TS23 4BX. Technical Support – Tel: 01642 710 719 Email: sales@nymas.co.uk

All information on the data sheet is correct at the time of publication. All measurements are approximate and subject to standard tolerances.

### DOC M Pack – Back To Wall Concealed Cistern, Basin (Two Taphole), Rails + Seat, Extended Lever (Chrome) DM800K/DG

#### FAQs

**Q – What is included in the pack?**

A – 5 x 600mm steel grab rails.  
1 x 800mm lift + lock steel hinged rail.  
1 x back to wall WC pan assembly.  
1 x back rest rail with PU pad  
1 x concealed cistern  
1 x ring only toilet seat with stainless hinges.  
1 x two taphole basin + fittings.  
1 x basin mixer tap.  
1 x spatula cistern lever.

**Q – Is the pack compliant with industry regulations?**

A – Yes, the pack is compliant with the Approved Document M of the Building Regulations 2000, is WRAS and LABC approved.

**Q – Is this cistern single or dual flush?**

A – Single.

**Q – Is this pan rimless or box rim?**

A – Box.

**Q – What's the maximum test load of the seat?**

A – 150kg.

**Q – Is the seat hinge standard or soft close?**

A – Standard.

**Q – Is the seat hinge fixing standard, quick release or top fix?**

A – Standard.