

Brierley 550mm One Taphole Basin INST01045

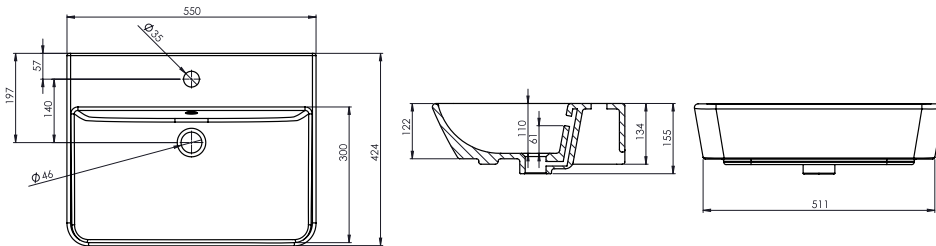


Specification

Finish	White
Dimensions	155(h) x 550(w) x 424(d) mm
Weight	16kg
Basin Material	Ceramic
Overflow	Yes
Chainstay Hole	No
Taphole Positioning	Centre

FAQs

Please see next page



Extra Dimensions

Internal Bowl Depth – 110mm
 Internal Bowl Front to Back – 300mm
 Internal Bowl Left to Right – 530mm
 Tap Ledge – 124mm
 Taphole Centre to Waste Centre – 140mm

Taphole Centre to Back of Basin – 57mm
 Waste Centre to Back of Basin – 197mm
 Width of Rear Basin – 550mm
 Basin Depth – 110mm

Key Features + Benefits

20

Years
Guarantee

**599-
500mm**

Medium
Size Basin



One Taphole
Basin

Certifications + Approvals

Roper Rhodes

Brassmill Lane Trading Estate, Bath, BA1 3JF. Technical Support – Tel: 01225 303 900 Email: sales@roperrhodes.co.uk

All information on the data sheet is correct at the time of publication. All measurements are approximate and subject to standard tolerances.

Brierley 550mm One Taphole Basin INST01045

FAQs

Q – What is the maximum water depth of the basin?

A – 61mm up to the overflow.

Q – Can this basin be wall hung?

A – Yes.

Q – Can this basin be mounted using a semi-pedestal?

A – Yes, use code INST01047.

Q – How thick is the basin edge/rim?

A – 8mm.

Q – Does the basin have an integral overflow?

A – Yes.