

Brierley 420mm Rectangle Cloakroom Basin INST01044



Specification

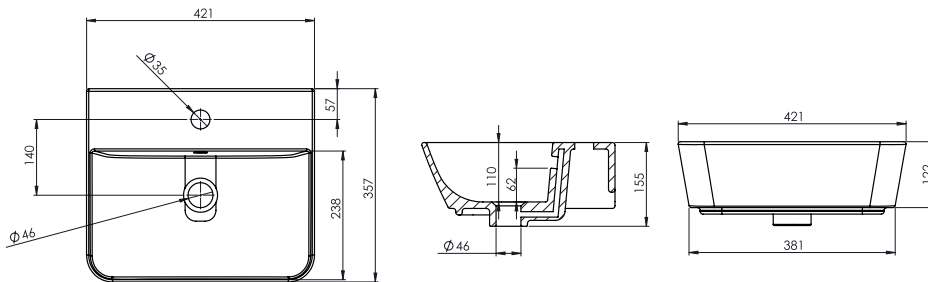
Finish	White
Dimensions	155(h) x 421(w) x 357(d) mm
Weight	11kg
Basin Material	Ceramic
Overflow	Yes
Chainstay Hole	No
Taphole Positioning	Centre

Features

Waste & Trap	Not included
--------------	--------------

FAQs

Please see next page

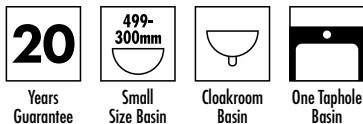


Extra Dimensions

Internal Bowl Depth – 110mm
Internal Bowl Front to Back – 238mm
Internal Bowl Left to Right – 400mm
Tap Ledge – 119mm
Taphole Centre to Waste Centre – 140mm

Taphole Centre to Back of Basin – 57mm
Waste Centre to Back of Basin – 197mm
Width of Rear Basin – 420mm
Basin Depth – 155mm

Key Features + Benefits



Certifications + Approvals

Roper Rhodes

Brassmill Lane Trading Estate, Bath, BA1 3JF. Technical Support – Tel: 01225 303 900 Email: sales@roperrhodes.co.uk

All information on the data sheet is correct at the time of publication. All measurements are approximate and subject to standard tolerances.

Brierley 420mm Recatangle Cloakroom Basin INST01044

FAQs

Q – What is the maximum water depth of the basin?

A – 62mm up to the overflow.

Q – Can this basin be wall hung?

A – Yes.

Q – Can this basin be mounted using a semi-pedestal?

A – Yes, use code INST01047.

Q – How thick is the basin edge/rim?

A – 14mm.

Q – Does the basin have an integral overflow?

A – Yes.