

# INSTINCT 2 DR Column Instructions

# INSTINCT®

Please retain for future reference

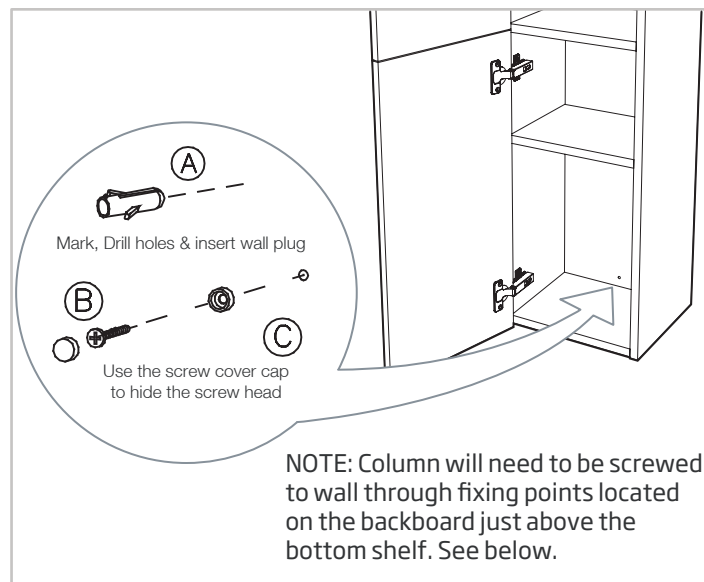
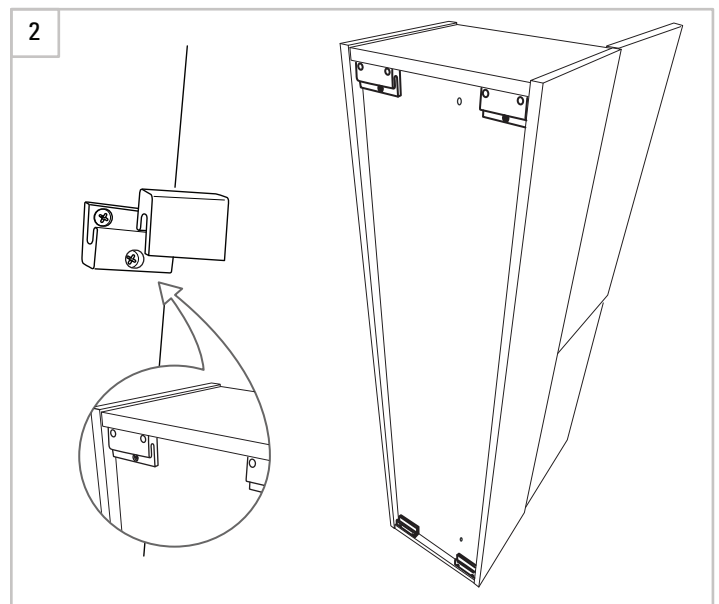
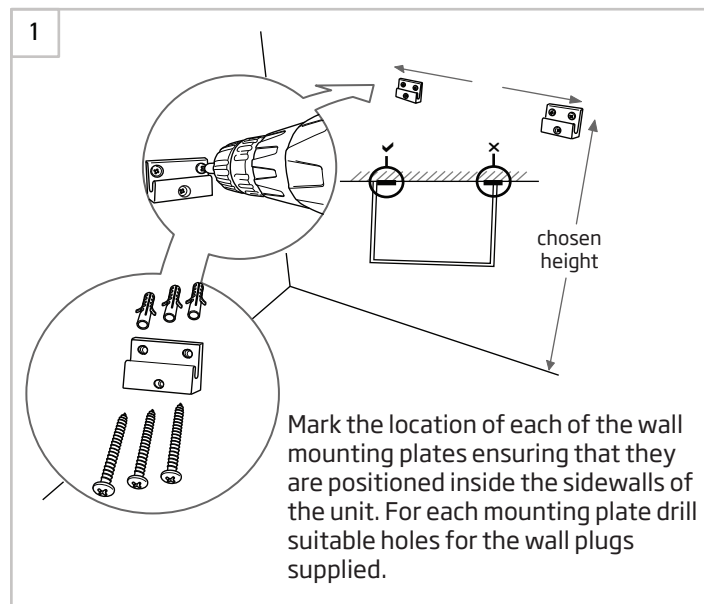
## Installation and Fitting Instructions

### Before you start

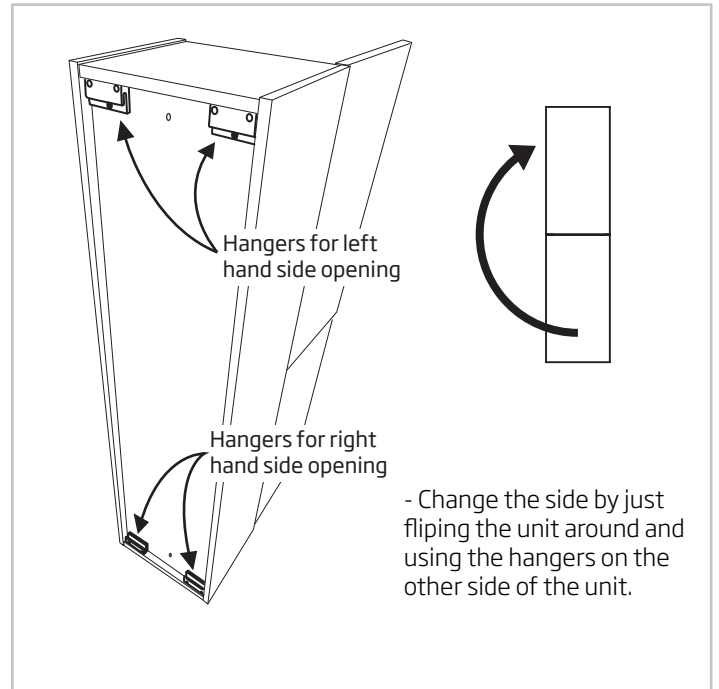
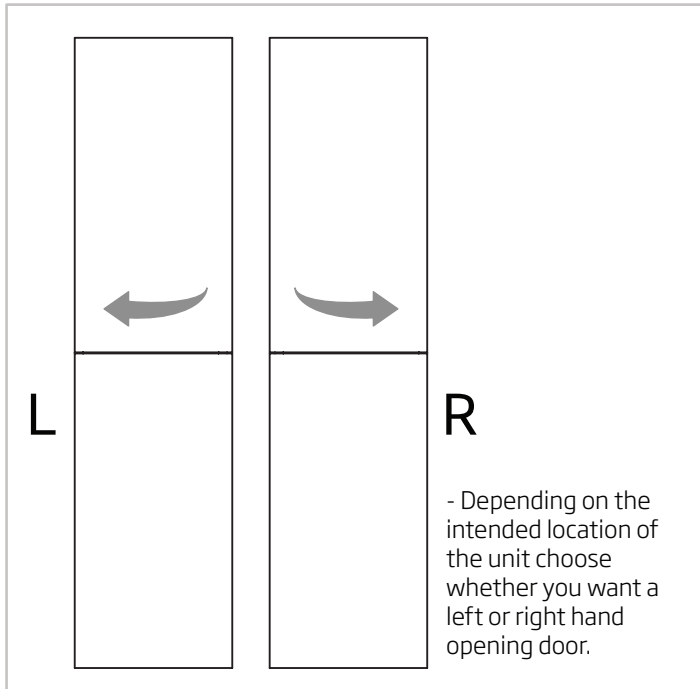
Wear suitable eye protection when drilling. Take care when using power tools near water - the use of a residual current device (RCD) is recommended. Beware of hidden pipes or cables. Take care when drilling tiled surfaces as the drill might slip. Use a piece of masking tape to prevent the drill from wandering.

The unit and basin are secured to a suitably strong / reinforced wall to ensure stability. Fix in place following instructions on page 2. If in any doubt please consult an expert.

### Wall mounting unit



## Reversible doors



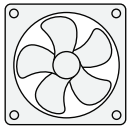
## Furniture Aftercare Instructions

As with all wooden furniture, this unit should be treated with care:

### We recommend...



Wipe away any water splashes or condensation after use. Excessive exposure to water will deteriorate the furniture.



All bathrooms should be well ventilated with a suitable extractor fan.



Clean with a soft damp cloth only.



Use a wax free polish if one must be used.

For removal of lime scale deposits use a suitable proprietary cleaner. If necessary test on an inconspicuous area first.

### Please DO NOT...



Do not scrub or scour



Do not use abrasive cleaning agents

## Replacement components

Should you require any replacement components for this product please contact customer services using the contact details below.

Customer Services: Brassmill Lane Trading Estate | Bath | BA1 3JF  
Tel : 01225 303 900