

Allerston 400mm Cloakroom One Taphole Basin

INSAL4BAS

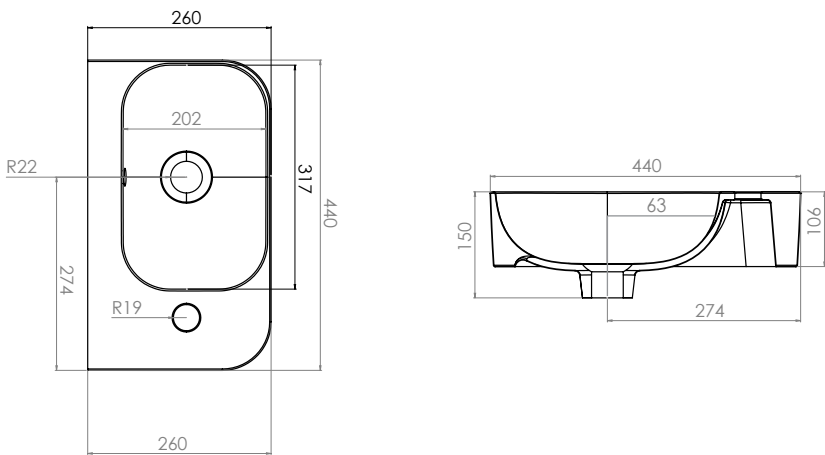


Specification

Finish	White
Dimensions	150(h) x 440(w) x 260(d) mm
Weight	7.99kg
Basin Material	Ceramic
Overflow	Yes
Chainstay Hole	No
Is Basin Reversible	No
Taphole Positioning	Centre

FAQs

Please see next page



Key Features + Benefits

2

Years Guarantee

One Taphole Basin

Certifications + Approvals

Technical Data Sheet | Sanitaryware

www.instinctproducts.co.uk

Allerston 400mm Cloakroom One Taphole Basin INSAL4BAS

FAQs

Q – What is the maximum water depth of the basin?

A – 63mm up to the overflow.

Q – What is the internal depth?

A – The internal depth is 102mm.

Q – What is the depth of the tapledge?

A – The tapledge is 110mm deep.

Q – What is the distance from the taphole centre to basin waste?

A – 198mm.

Q – What is the overflow rating?

A – Overflow rating is CL10.